



## Wells Park Court, Sydenham

Guide Price £400,000



## Property Summary

Guide Price: £400,000 - £425,000

Propertyworld is proud to bring this stunning two bedroom, purpose built flat to market with SHARE OF FREEHOLD, PRIVATE BALCONY, 900+ YEAR LEASE (looking into Wells Park) and OFF STREET PARKING. Rare to market, this is a fabulous property and a rare opportunity for discerning first time buyers. The property is flooded in light and benefits from generous room sizes and beautifully proportioned accommodation throughout. Beautifully cared for by the current owners, including a stunning kitchen upgrade, the property is listed for sale in fabulous condition.

Taylors Lane is a quiet residential road, running aside beautiful Wells Park and close to Kirkdale and the centre of Sydenham. Dulwich Woods and the popular Dulwich Woodhouse Pub are close by, as are lots of transport links and attractive eateries.

The flat is spacious and includes: a gorgeous lounge with PRIVATE BALCONY looking onto and towards beautiful Wells Park. The room is flooded in light, with an engineered wood floor and neutral decor. With ample space to dine, the room is the central hub and centre piece of the flat. The kitchen is attached to side, fully fitted and very modern. There is a range of shaker style dark green wall and base units, stunning oak worktop, integrated gas hob, electric oven, tiled splash back and ceramic butler sink. The bedrooms are both generous and beautifully presented - with neutral decor, double glazed windows and fitted carpet. There is a modern family bathroom with three piece suite, shower over bath, heated towel rail plus there is a generous and very welcoming entrance hallway. Tucked away at the top of Wells Park Court, the property has a great outlook front to back and with a stunning balcony and OFF STREET PARKING, lots of extra benefits that make it extra special. A dream FIRST TIME BUY, call Propertyworld on 0208 488 001 to be the first to view.

Sydenham Sales

020 8488 0011

[www.propertyworlduk.net](http://www.propertyworlduk.net)

## Property Summary

- Two bedroom flat
- Modern, purpose built
- Private balcony
- OFF STREET PARKING
- SHARE OF FREEHOLD
- Beautifully presented
- Ideal FIRST TIME BUY
- Small, low rise development
- Stunning location
- Rare and wonderful

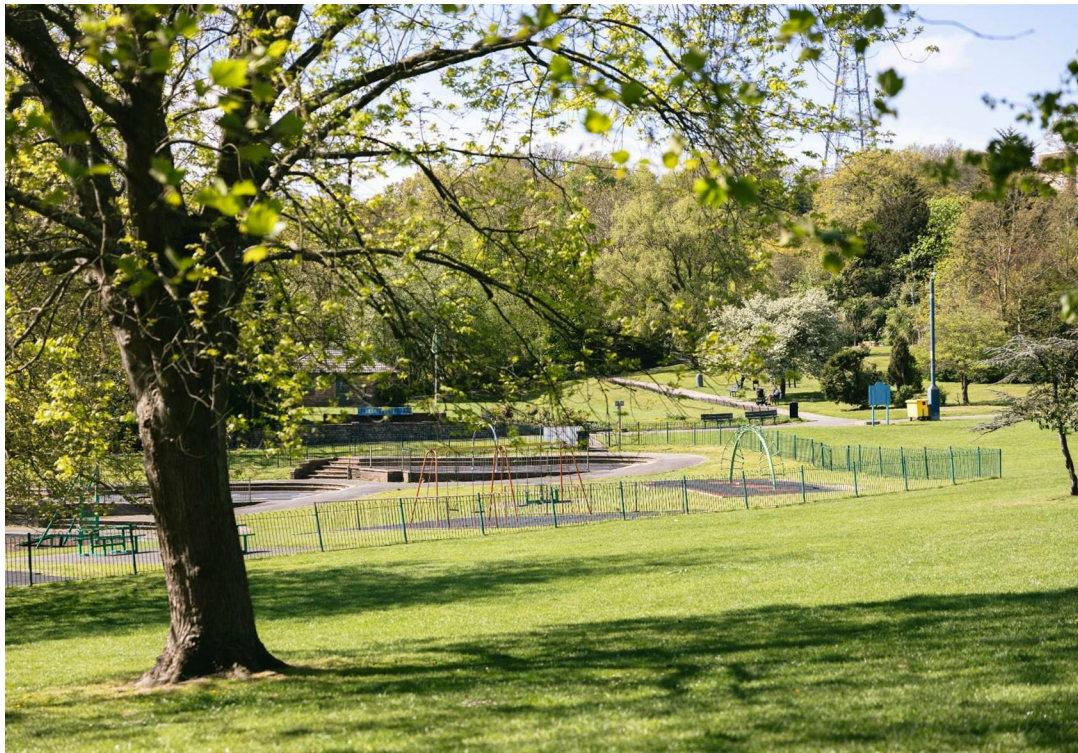
## Our Vendor Loves...

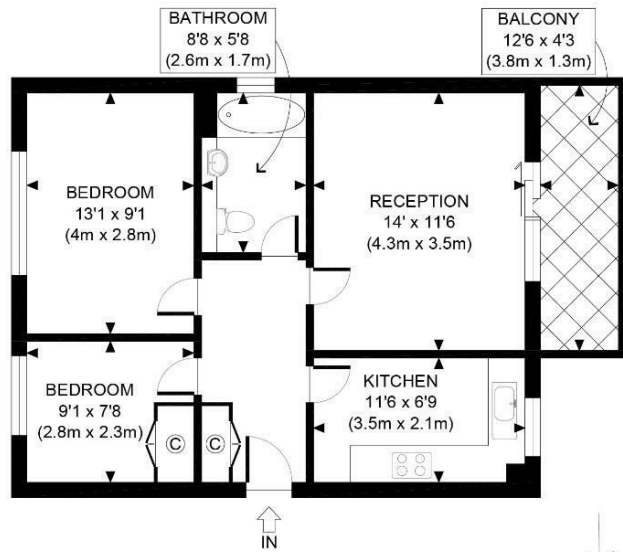
Our Vendor Loves..

"Living at Wells Park Court has been such a joy for us. One of the things we've loved most is having Wells Park just across the road, with its green open spaces, play areas and peaceful spots for a quiet walk. The Green Chain Walk is right on our doorstep, giving us miles of greenery to explore all the way towards Crystal Palace and beyond.

The area has such a friendly, welcoming atmosphere. Our "doggy friends" from the park have become part of our little community – it's one of those places where neighbours stop to chat and people look out for each other. We've also loved how perfectly balanced the location is. It's peaceful and quiet here, surrounded by trees and open space, yet we can be in central London in about 25 minutes by train whenever we fancy a day or evening in the city".







GROUND FLOOR  
GROSS INTERNAL  
FLOOR AREA 573 SQ FT

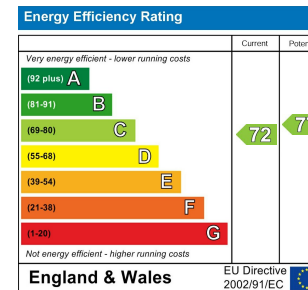
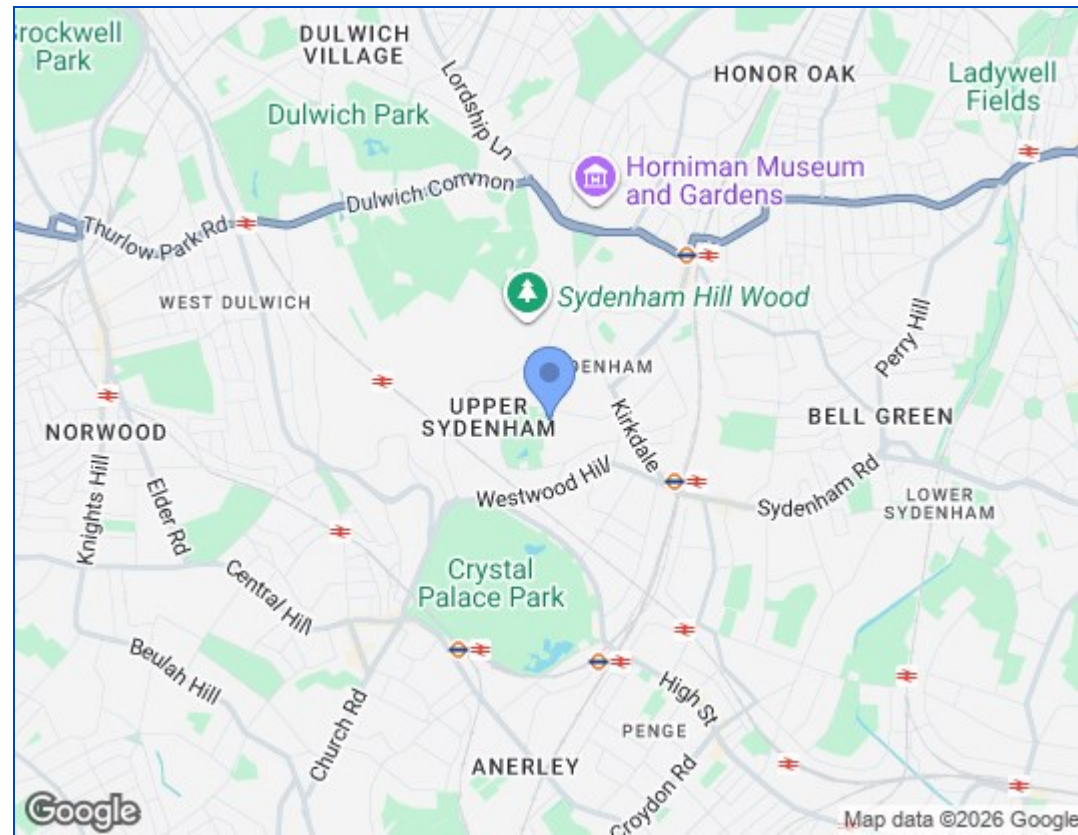
**APPROX. GROSS INTERNAL FLOOR AREA 573 SQ FT / 53 SQM**

Disclaimer: Floor plan measurements are approximate and are for illustrative purposes only. While we do not doubt the floor plan accuracy and completeness, you or your advisors should conduct a careful, independent investigation of the property in respect of monetary valuation

wells park court

date 20/03/26

photoplan



These particulars, whilst believed to be accurate are set out as a general outline only for guidance and do not constitute any part of an offer or contract. Intending purchasers should not rely on them as statements of representation of fact, but must satisfy themselves by inspection or otherwise as to their accuracy. No person in this firm's employment has the authority to make or give any representation or warranty in respect of the property.

